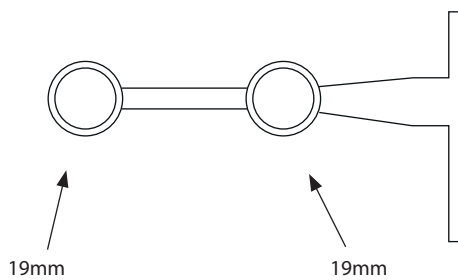


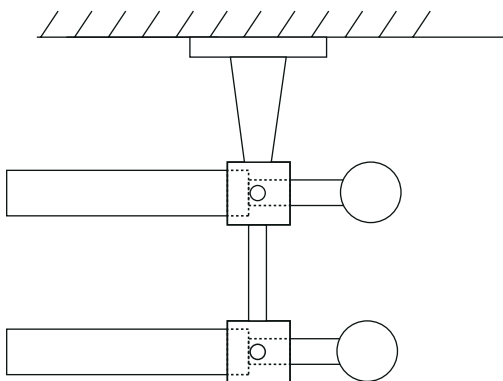
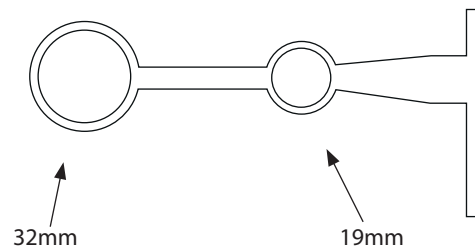
DOUBLE POLE FITTING INSTRUCTIONS

Identify type of system being installed

19mm /19mm SYSTEM

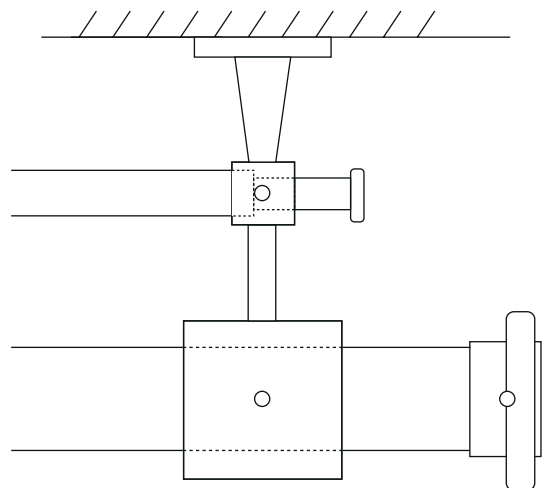
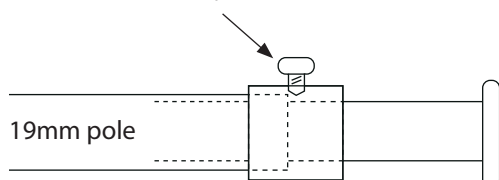


32mm/19mm SYSTEM



All 19mm double poles should be fitted so the pole ends within the bracket (before grub screw).
The grub screw is tighten to hold finial in place

Grub screw holds finial in place



Grub screw holds 32mm pole only